

# The Essential Guide to Bring Your Own PC

Empower hybrid workers while supporting  
IT with a BYOPC strategy



# Contents

## Who this is for:

Chief information officers and other IT decision makers who want to empower hybrid workers while maximising their investments in IT.

## Estimated reading time:

10 minutes

## Introduction

Why this time is different

**03**

## Chapter / 01

Manage more with less with a BYOPC strategy

**04**

## Chapter / 02

Enable BYOPC with Windows 365

**09**

## Chapter / 03

How BYOPC works with Windows 365

**12**

## Conclusion

Empower your hybrid workforce. Maximise your IT investments.

**15**

## Introduction

# Why this time is different

For about a decade, tech companies have been touting the benefits of the BYOPC (Bring Your Own PC) deployment strategy. It was easy to be sceptical, especially when promises of cost savings, ease of management and security didn't always hold water in the real world. But now that the real world has changed and hybrid work is here to stay, organisations like yours are likely dealing with hybrid work scenarios, raising questions like:

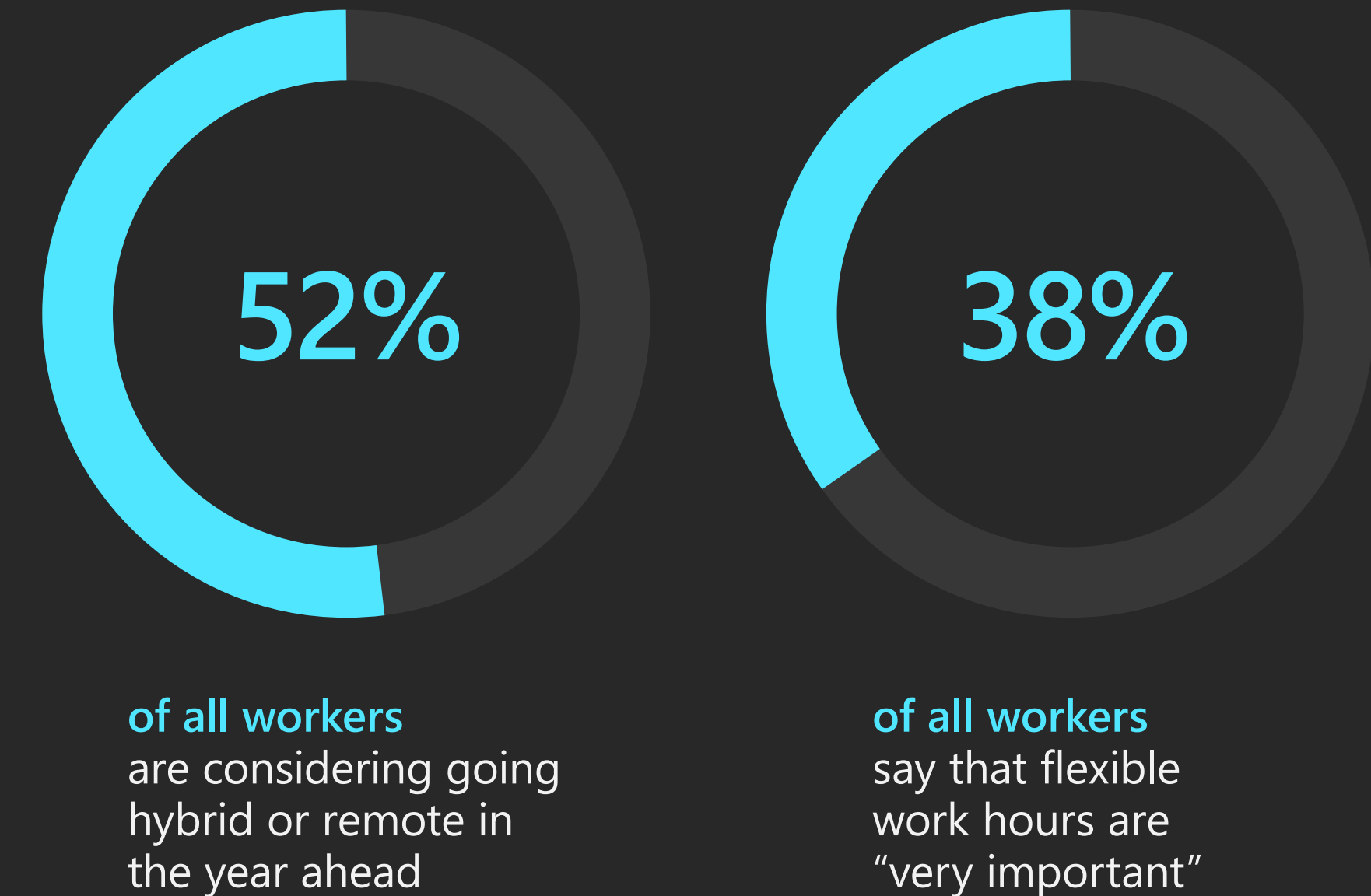
- How do you accommodate a distributed workforce?
- How do you onboard new employees, seasonal workers or temporary workers?
- How do you ensure that corporate resources on employees' personal devices are secure and uncompromised, wherever employees choose to work?

Every day, organisations adapt to expansion and change. With these challenges in mind, it might be the right time for your organisation to consider a BYOPC strategy.

As you'll learn in this eBook, BYOPC helps enable hybrid work scenarios, keep company resources secure and ease the burden on IT departments – all while taking advantage of existing resources and maintaining productivity.

And a new solution from Microsoft – the Windows 365 Cloud PC – can enable your BYOPC strategy, helping you empower your hybrid workforce while maximising existing investments in IT.

## How and where we work has changed<sup>1</sup>



### Definition / BYOPC:

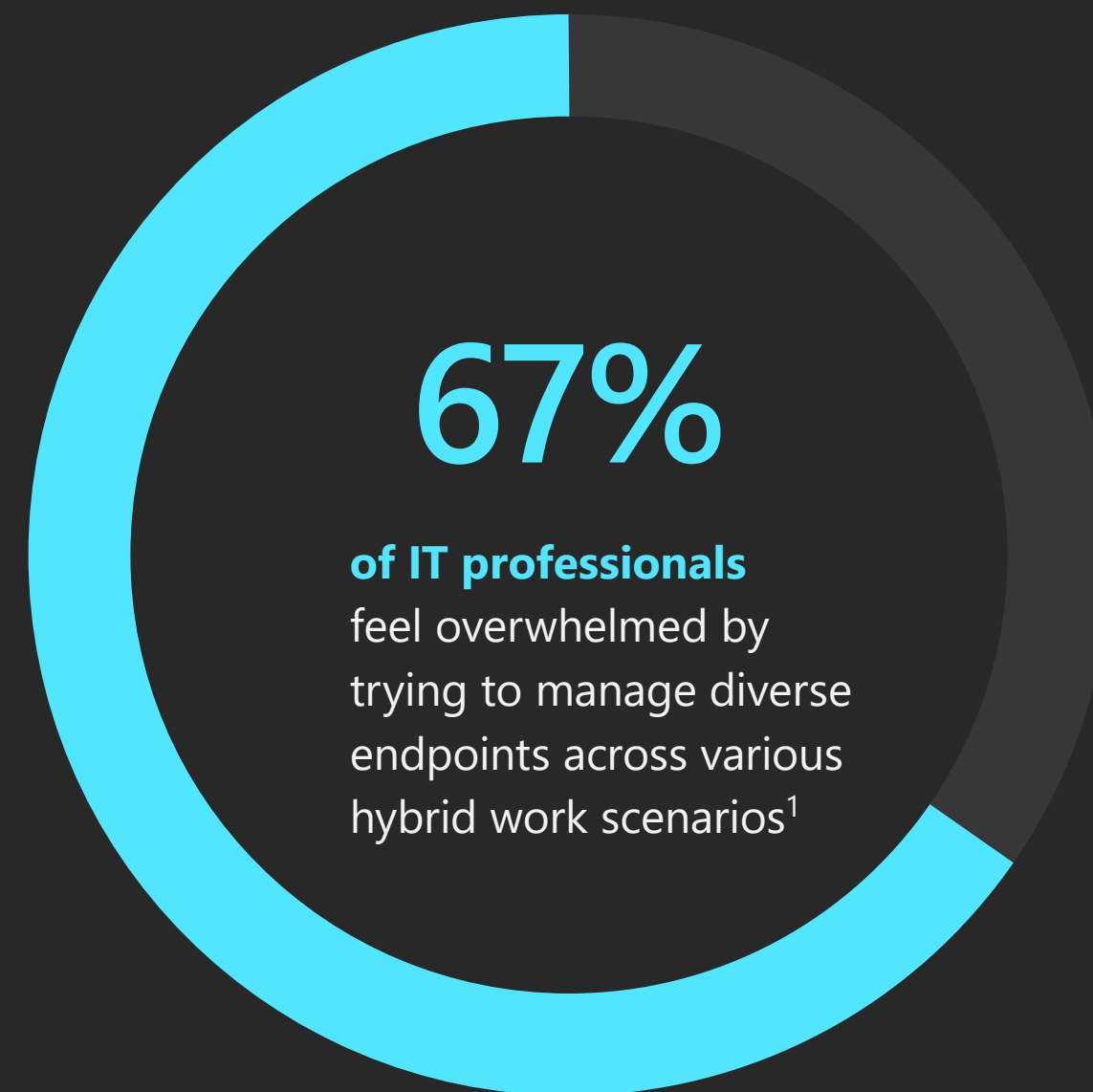
Acronym for Bring Your Own PC, a deployment strategy that provides employees the flexibility to access corporate applications, services and data from the device of their choice.

<sup>1</sup>The Work Trend Index Microsoft Corporation, 2022. Data in the report is based on a survey conducted by an independent research firm, Edelman Data x Intelligence, among 31,102 full-time employed or self-employed workers across 31 markets between 7 January, 2022, and 16 February, 2022.

Chapter

# 01/





**Definition / Zero Trust model:**

Instead of assuming everything behind the corporate firewall is safe, the Zero Trust model assumes a breach by external threats and verifies each request as though it originates from an open network. Regardless of where the request originates or what resource it accesses, Zero Trust teaches us to “never trust, always verify.” Every access request is fully authenticated, authorised and encrypted before granting access.

<sup>1</sup>“IT Trends Report: Remote Work Drives Priorities in 2021,” JumpCloud, 2021.

# Manage more with less with a BYOPC strategy

In a world where IT departments need to adapt to the ever-changing needs of a distributed workforce – all while providing a secure and seamless computing experience – a BYOPC strategy can help maximise existing resources while maintaining productivity.

**Help keep corporate resources secure**

By implementing a Zero Trust model, organisations enable secure and compliant access for all employees, no matter what device they use. If devices are lost or stolen, data is saved and secured in the cloud, helping ensure your organisation is protected and can continue operating without interruption.

**Address the diverse needs of a hybrid workforce**

Today, organisations manage many endpoints, and employees want easy access to their work. BYOPC programmes let organisations grant access on employees’ personal devices while maintaining security and compliance. After onboarding, employees have secure access to the apps and data they need on any device, wherever they are.

### Streamline operations to support IT

Remote and hybrid work has compelled companies around the world to rethink how they manage and secure employee devices. In fact, 67% of IT professionals feel overwhelmed by trying to manage diverse endpoints across various hybrid work scenarios.<sup>2</sup> With growing IT operational overhead costs, BYOPC offers a way to streamline operations with hybrid IT strategies like app compatibility and unified cloud management, helping IT professionals focus on driving growth without getting bogged down in device procurement, deployment and management.

### Save money with efficiency

Implementing BYOPC programmes can help businesses maximise time and resources. Solutions like Microsoft Intune allow administrators to manage all PCs, both

physical and cloud-based, with the same console, relying on their existing IT skills and experience.

### Solve budget and supply chain constraints

For organisations struggling with – or hoping to avoid – higher IT spend and supply issues, BYOPC provides an alternative to traditional device procurement and deployment. With a BYOPC programme in place, rather than corporate-owned devices, organisations allow employees to use their own devices to access work apps and data. IT teams can quickly set up and configure those personal and non-corporate-owned devices in addition to existing, company-owned computers. That way, employees are free to choose the device that works best for them. And, by making use of these readily available devices, organisations can avoid supply chain issues.



<sup>2</sup>"IT Trends Report: Remote Work Drives Priorities in 2021," JumpCloud, 2022.

## BYOPC benefits for IT departments

- Zero-touch approach for quick onboarding and offboarding
- Simplified device management and persistent integration between devices
- Accelerated provisioning and deployment
- Lowered or eliminated operational overhead
- Cost predictability and ability to adjust spending in alignment with business goals
- Ability to scale as needed and quickly adjust to employees' usage patterns

## BYOPC benefits for employees

- Ability to perform work on the device of their choice
- Faster onboarding, with no need to wait for a device to be provisioned and deployed
- Complete access from any location, on any device
- Ability to work offline and instantly sync when connected



Organisations that want to support various hybrid work scenarios should consider a BYOPC strategy for the following types of workers:

- **Hybrid and remote workers**, including developers or employees added through an acquisition or merger, who frequently transition from the office to remote work locations and need secure, continuous access to company resources.
- **Temporary and seasonal employees** who are hired to meet surges in demand and need Windows applications and cloud services.
- **Students, interns and trainees** who will only need access to company resources for a short period of time.



Chapter

# 02,



## Windows 365 Cloud PCs are:

1

Secure for  
anywhere  
access

2

Simple  
to  
manage

3

Easier  
to  
deploy

4

Customisable  
to your  
needs

### Definition / Windows 365 Cloud PC:

Windows 365 delivers a personalised Windows experience from the Microsoft Cloud to a Windows 365 Cloud PC, accessible on any device, wherever employees are located.

# Enable BYOPC with Windows 365

Windows 365 provides employees with a comprehensive and secure Windows experience in the Microsoft Cloud, accessible from any device. Full-time employees, contract workers, shift employees and seasonal personnel can access their personalised apps, settings, desktop and information on any device they choose to work with – no matter where they are.

Implementing Windows 365 with Microsoft Entra ID and Microsoft Intune allows for streamlined set-up and scaling of a BYOPC strategy, resulting in quicker onboarding processes, decreased device management burden and security risks and continuity in technology performance. Windows 365 Cloud PCs are also easily customisable, deployable, manageable and secure, which helps organisations get the most from their technology investments while addressing the needs of their workers.

## Windows 365 is for organisations of all sizes

Enabling BYOPC with Windows 365 is a good fit for organisations, as well as governments, that need to accommodate elastic and distributed workforces, while also providing specialised workloads and versatile computing and storage capabilities.

## Give every employee the Cloud PC experience they need to be productive with Windows 365



### Secure by design

Protect against security risks and provide better data protection. Windows 365 combines the power and security of Windows with the efficiency and scalability of the cloud to deliver secure access to Windows 365 Cloud PCs on any device.



### Productivity on any device

Equip people with Cloud PCs so they can be onboarded quickly and ready to work on any device, including Windows, iOS and Android systems. With Cloud PCs, employees have access to their personalised Windows content, apps, desktop and settings wherever they sign in.



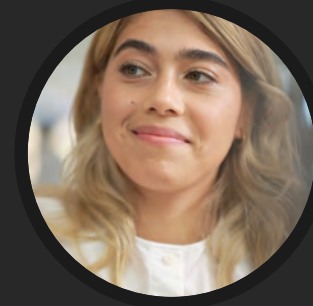
### Manage more with less

Use existing IT resources to set up and configure Cloud PCs. Windows 365 is simple to set up and scale without requiring new infrastructure or specialised skills, allowing organisations to maximise the investments they have already made.



Chapter

# 03,



**Jenna**

Project-based consultant

### One Windows 365 Cloud PC

Jenna's personalised Windows experience is shared across three devices.



**Personal laptop**  
for work in Atlanta



**Company-provided tablet**  
for travel and focus groups



**Company-provided desktop**  
for work in Barcelona

# How BYOPC works with Windows 365

Explore what adopting Windows 365 can do for a company that employs hybrid workers and has offices across the globe.

### Jenna, a project-based consultant:

Jenna was hired for a period of six months to conduct market research for a multinational organisation and needs to travel between the company's offices in Atlanta and Barcelona. While working and travelling, she'll require unrestricted, full-time access to the company's resources on a computer in each location, plus the tablet she'll be using in focus group sessions.

Because Jenna will be with the company for only a short period of time, procuring new equipment for her isn't a great use of company resources. And, because she'll be

travelling, her devices are at a higher risk of being lost or stolen. Jenna's need for convenience – and her preference for her personal laptop – are also big factors.

Jenna's IT administrator, Camila, decides Jenna is a good candidate for a Windows 365 Cloud PC. She'll be able to access her Cloud PC on three different devices: her personal laptop in Atlanta, a company-provided desktop in Barcelona and a company-provided tablet will travel with her. She needs complete continuity between these devices.

On the next page, follow along as Camila supports Jenna throughout her contract by connecting her with the resources she needs to be successful – all while saving time and protecting the organisation.

## Follow along as Camila supports Jenna throughout her contract



**Camila**  
IT administrator  
experience

### Quick and easy provisioning

On the first day of Jenna's contract, Camila assigns her a Windows 365 Cloud PC under the company's Microsoft 365 provisioning policy. She chooses the technical specs (processing speed, RAM and storage) that best suit Jenna's needs.

### Cost-effective, scalable computing

The cost of assigning a licence to Jenna is minimal. Camila can also adjust the number of Cloud PCs as the company's remote workforce fluctuates.

### Improved endpoint security

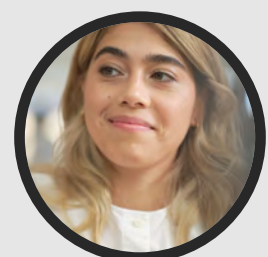
Because Jenna's Cloud PC is instantly integrated with the company's existing IT ecosystem, all standard security protocols and conditional access policies are replicated on Jenna's machine.

### Simplified IT management

Behind the scenes, Camila monitors Jenna's Cloud PC alongside other physical PCs using Microsoft Intune. She can run antivirus scans, review error codes and statistics and even restore past versions of the Cloud PC remotely.

### Reduced risk of data loss

At the end of Jenna's contract, Camila unassigns her Cloud PC and offboards her in a matter of minutes. She doesn't have to worry about collecting a device and inspecting it for damage.



**Jenna**  
Remote employee  
experience

### User-friendly start-up process

Jenna signs in to the Cloud PC through the app on her desktop or browser and learns how to launch her new Cloud PC on all her devices using the Windows 365 remote desktop application.

### Reduced time to full productivity

Jenna familiarises herself with the apps and files on her Cloud PC. She's up and running with full access to company resources within minutes of being assigned her Cloud PC.

### Continuity between devices

As Jenna performs her work, her credentials, browser settings, files, networks, printers and even her desktop background are familiar and continuous between devices – she rarely needs to travel with more than her tablet.

### Offline syncing

When Jenna travels, it's easy for her to work offline on flights or in between networks. Her Cloud PC immediately syncs as soon as she's reconnected, so she can always pick up where she left off.

### Streamlined offboarding

When Jenna's contract ends, offboarding is quick. IT disables access on her personal laptop and the company easily recovers the intellectual property that was created during her engagement.

## Conclusion

# Empower your hybrid workforce. Maximise your IT investments.

Windows 365 is designed for today's new normal. It enables a BYOPC strategy, providing organisations that are supporting distributed, hybrid workforces with a way to maximise IT investments without compromising security or productivity.

- **Empower hybrid workers** with access to their personalised apps and tools on any device, helping them stay productive wherever they are.
- **Secure access to company resources and data.** Windows 365 is aligned with Zero Trust, lowering the risk of cyberthreats and data loss.

- **Give leaders and managers what they need** to support hybrid work scenarios while keeping operations running smoothly.
- **Support your IT department** by simplifying procurement, management and scaling devices so they can focus on driving future growth and guarding against potential threats.

